



VEHICLE/TRAILER LOADING GUIDE

All vehicles being used in the carriage of goods must comply with The Road Traffic (Vehicle) Regulations 2014).

In short, the following guidelines apply:

Trailers without brakes:	Maximum 750kg
Trailers with brakes and no compliance plate:	Maximum 750kg
Trailers with brakes and compliance plate:	Up to limit of compliance plate (Maximum 2000kg)

Greater than two tonne must be in accordance with section 350 of the Road Traffic (Vehicle) Regulations 2014.

The Road Traffic (Vehicle) Regulations 2014

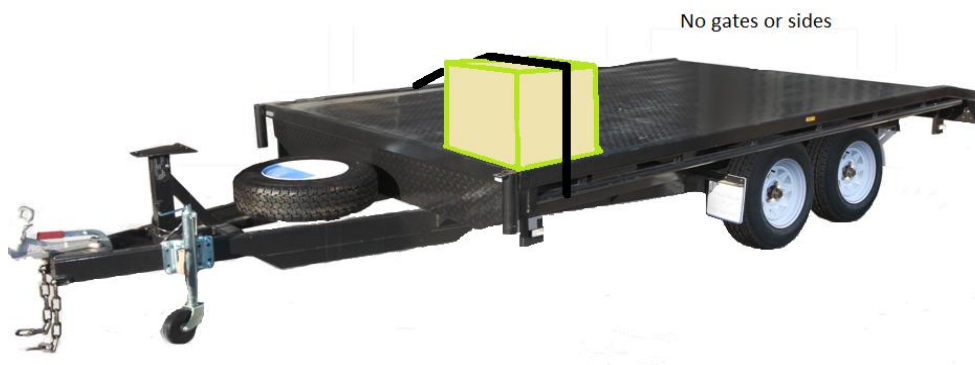
https://www.slp.wa.gov.au/legislation/statutes.nsf/main_mrtitle_13558_homepage.html

RESTRAINTS GUIDE

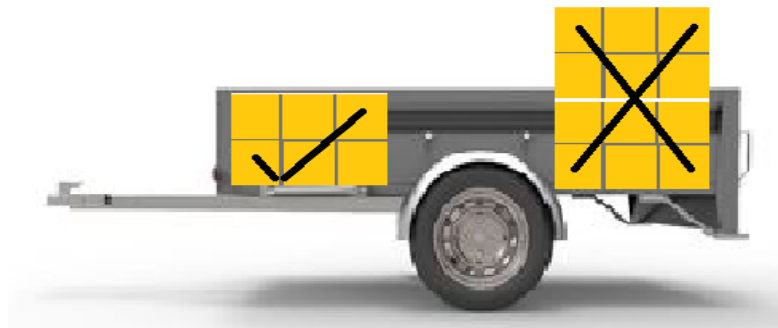
<http://www.ntc.gov.au/heavy-vehicles/safety/load-restraint-guide/>

The term “**Vehicle**” from this point will mean vehicle and trailer.

Vehicles with **no sides** must have loads restrained even if blocks are strapped on pallets or in packs – see image below:



Vehicles with sides may have to have the load restrained depending on the height of the load. If the height of the load is greater than the sides of the vehicle then the load is required to be strapped to the vehicle. See diagram below:



In the above image, the blocks to the front of the vehicle are not required to be strapped because they do not exceed the height of the sides of the vehicle. The blocks to the rear of the vehicle must be restrained as they exceed the height of the vehicle sides – even if the blocks themselves are strapped. The image below shows the correct method.

